

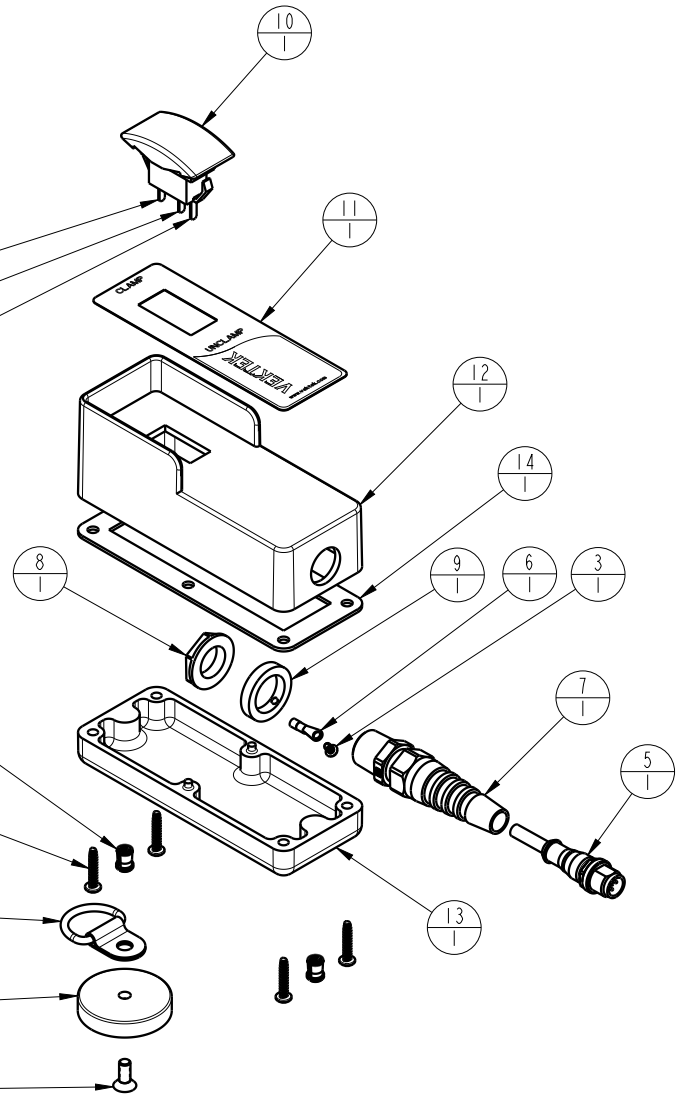
PARTS LIST, PENDANT, 4/3 VALVE, CC OR PBC

NO	QTY	PART NO	DESCRIPTION
N/A	N/A	95595540	ASSY, PENDANT, 4/3 VALVE, CC OR PBC
1	1	21410062	FLAT HEAD CAP SCREW, 10-32 x 1/2
2	4	21410093	SCREW, TORX, 6-19 X .75
3	1	21410094	SCREW, RND HEAD, 4-40 X .19
4	2	21420028	INSERT, THREADED, 10-32 x 3/8
5	1	27542200	CABLE, M12, 5 POLE, MALE, 2M
6	1	28112100	TERMINAL, RING, INSUL, 18-22 GA, #4
7	1	28611201	RELIEF, STRAIN, CORD, FLEX, 3/8 NPT
8	1	28611202	NUT, LOCK, GLAND, 3/8 NPT
9	1	28611203	RING, GROUNDING, 3/8 NPT
10	1	29123101	SWITCH, ROCKER, 3 POSITION
11	1	67040079	DECAL, SWITCH, PENDANT
12	1	85595027	BOX, SWITCH, PENDANT, ROCKER
13	1	85595028	COVER, SWITCH, PENDANT
14	1	85595029	GASKET, SWITCH, PENDANT
15	1	85595034	MAGNET, CERAMIC, 1.57 X .31
16	1	85595035	RING, TIE-DOWN, 1/4

PIN 4, BLACK WIRE
 PIN 1, BROWN WIRE
 PIN 2, WHITE WIRE

TIGHTEN UNTIL SNUG
 DO NOT OVER TIGHTEN

TIGHTEN UNTIL SNUG
 DO NOT OVER TIGHTEN



NOTE:

1. STRIP APPROX. 4" OF INSULATION FROM CABLE AND 1/4" FROM INDIVIDUAL WIRES BEING USED.
2. SOLDER WIRES AS SHOWN TO SWITCH TERMINALS.
3. CRIMP GREEN/YELLOW WIRE TO RING TERMINAL AND SCREW TO GROUND RING.
4. CRIMP EACH UNUSED WIRE WITH INSULATED CAP.